



State of Palestine
Ministry of Education & Higher Education



The Palestinian Graduate Tracking System

Informational Brochure for Graduate Tracking System (GTS)

With support from the World Bank, the Ministry of Education and Higher Education (MOEHE) has developed and implemented an electronic Graduate Tracking System (**GTS**) in all Tertiary Education Institutions (TEIs) in the West Bank and Gaza and at MOEHE to collect information about graduates and their transition and fitness into the labor market. **GTS** is an important component of the Education-to-Work Transition Project (E2WTP) financed by the World Bank and which aims to improve the quality and content of higher education and to bridge the gap between TEIs and the labor market.

GTS – developed and implemented by New Soft for Programming and Information Technology -allows TEIs to design surveys and target them to specific student groups within the institution and to graduates who left the institution as well as major employers in the labor market to capture a variety of information and opinions including information about their:

1. Educational choices in terms of TEIs, degrees, courses and specializations;
2. Post-graduation employment and how difficult/easy it was to find a job;
3. Fitness between educational training and the skills needed in the job market;
4. Suggestions regarding educational curricula, methods and specializations;
5. Changes to career and professional choices after graduation.

National Surveys

The **GTS** allows MOEHE to design national surveys in collaboration with TEIs and distribute them to all TEIs to collect mandatory national information about TEIs, students and graduates. This information will be useful to TEIs and MOEHE as it will provide a national view of the education system, its integration with the labor market and the economy and highlight the areas that need development and improvement. In particular, MOEHE has designed three mandatory surveys that were distributed to all TEIs to collect such information:



1. Student Survey: aimed at students in the final year of their study before graduation.

Pages Number : 1	Sections Number : 7	Questions Number : 20
------------------	---------------------	-----------------------

page

personal information

Q 1) Personal Information

The name

Phone / Mobile Phone

Email Profile

Your e-mail I got from the university

Phone / Mobile Phone to a relatives

Email to a relatives

City / village / camp I have lived before you join the university name

2. Graduate Survey: aimed at graduates one year after their graduation from the TEI.

Pages Number : 1	Sections Number : 6	Questions Number : 44
------------------	---------------------	-----------------------

page

Basic graduate Information

Q 1) basic information alumnus

student's name

Phone / Mobile Phone

E-mail

Phone / Mobile Phone to a relatives

Email to a relatives

City / village / camp who currently live in the name

The province

Name of the country if you are outside Palestine



3. Employer Survey: aimed at local and international employers of Palestinian graduates.

Pages Number : 4

Sections Number : 5

Questions Number : 19

Page 1

Page 2

page 3

page 4

Institution info

Q 1) Institution info

Name

Name

Phone

Phone

Mobile

Mobile

Country

Unknown

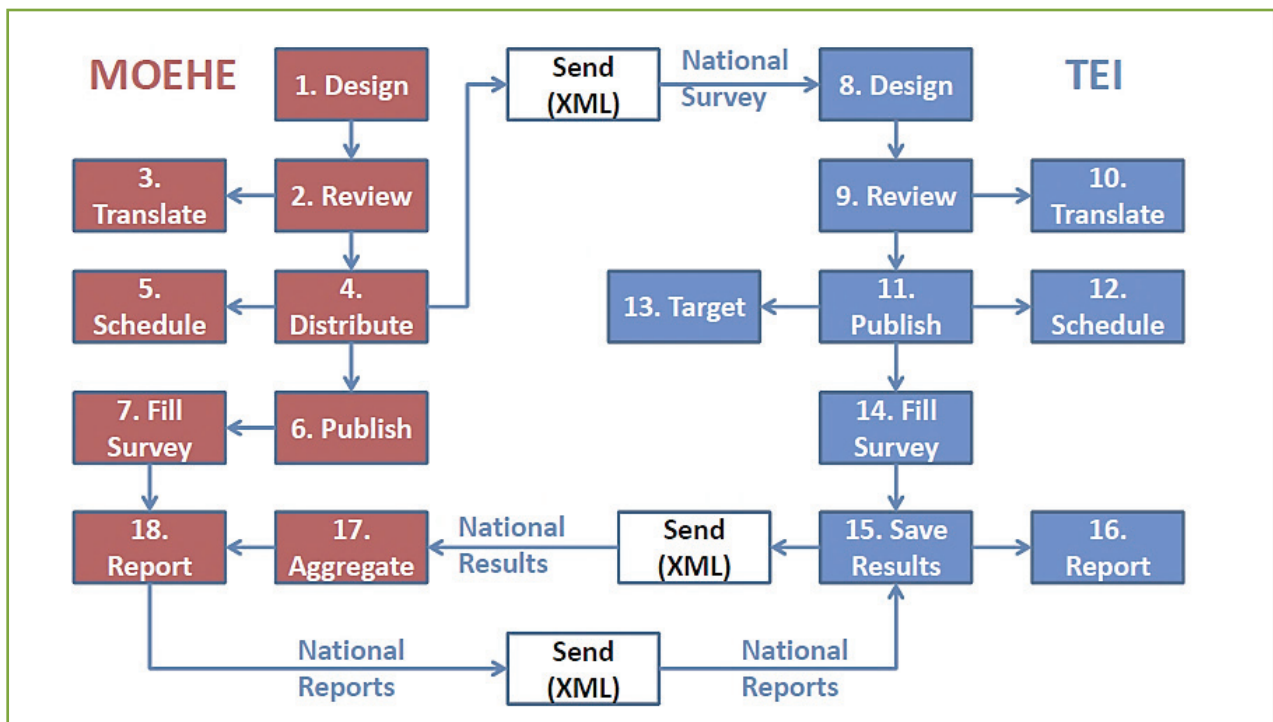
If the country of Palestine, the name of the city, the village where the company exist

رام الله

GTS Features

GTS was designed and implemented as a distributed system, installed at MOEHE and at each TEI in Palestine, for a purpose. **GTS** was envisaged as a data collection tool for each TEI to meet their local needs and purposes. But the local **GTS** is integrated with a national **GTS** at the Ministry to help collect mandatory data at the national level: The Ministry data will be available (sent back) to TEIs, to enable them to benefit from national data collected at other similar institutions. The **GTS** therefore serves both local and national needs for information about the education system.





It is important to note the following key features about this system:

1. The local **GTS** implemented can be used to design and publish any survey the TEI needs: the information collected will remain private to the TEI, not accessible to MOEHE or other TEIs.
2. The national **GTS** can be used to design and publish any survey the Ministry needs, not just those surveys aimed at TEIs. The information collected from such surveys or their results can be made accessible to TEIs if the Ministry makes them public.
3. The integrated **GTS** between MOEHE and TEIs is limited to national mandatory surveys published by the Ministry to all or to specific group of TEIs: the information collected from such surveys will have a local copy at each TEI and be aggregated in a national database at MOEHE.
4. **GTS** enables collaboration in the design and review of surveys among a group of designers/authors before publishing it. This will enable TEIs to consult departments, faculties and staff before finalizing a survey. It will also enable MOEHE to consult with TEIs before finalizing a national survey.
5. **GTS** data will be version controlled to enable the evolution of surveys from year to year and to facilitate the accurate analysis of historic data collected over a number of years. Both local and national surveys will be given a version code that uniquely identifies each survey, its target audience and its publishing cycle.
6. **GTS** is implemented on local infrastructure at the TEI or the Ministry using their Web and database systems to host the tool and store its data. **GTS** can be accessed over the public internet or through the local intranet of the TEI/MOEHE.
7. In cases where some TEIs lacked the technical infrastructure or skills to host or support **GTS**, the Ministry provided an alternative centralized hosting for their **GTS** on MOEHE infrastructure: in such cases only authorized TEI staff can access and use the system via secure internet link.
8. **GTS** is secured via the security infrastructure and policies and procedures used at TEIs/MOEHE for securing their admissions and administration systems. When external access is needed like when publishing a public survey, the surveys are published on the public web site of the TEI/MOEHE.



9. The electronic exchange of data between MOEHE and TEIs is secured using HTTPS protocol.
10. **GTS** is integrated with internal student and staff administration systems at each TEI. This enables **GTS** administrators to import student, staff and course data necessary for targeting a specific survey to a specific audience and for filling automatic data fields.

The Survey Design Tool

GTS is a web-based system for designing and publishing surveys. It supports the most common types of questions that you can meet in such surveys including:

1. Binary yes/no questions;
2. Multiple choice questions;
3. Group common answer category questions;
4. Conditional jump question (if answer is A jump to question X);
5. Open text questions (numbered list or free text).

The screenshot displays the GTS Survey Design Tool interface. On the left is a 'Question List' sidebar with icons for various question types: Single-Choice, Multi-Choice, Free Text, Numbered List, Yes No, Matrix Rating, and Personal Information. The main area is titled 'Question' and contains a form for creating a new question. The 'Question Type' is set to 'Multi-Choice'. The 'Q 20) Question Text' field contains 'Enter your question'. Below this is a 'Question Descriptions' field. The 'Answer Choices' section has two input fields: 'Enter Your Option' and 'Click to add option'. At the bottom, there are checkboxes for 'Add an "Other" Answer Option or Comment Field' and 'Require an Answer to This Question'. 'Create' and 'Cancel' buttons are at the bottom right.

GTS supports designing a new survey using two approaches: design from scratch by adding questions to an empty survey, or design from template, by editing questions from a previous survey. The tool enables authorized designers to add, remove or edit questions in a survey. It also enables the institution to define different roles in a publishing workflow that includes:

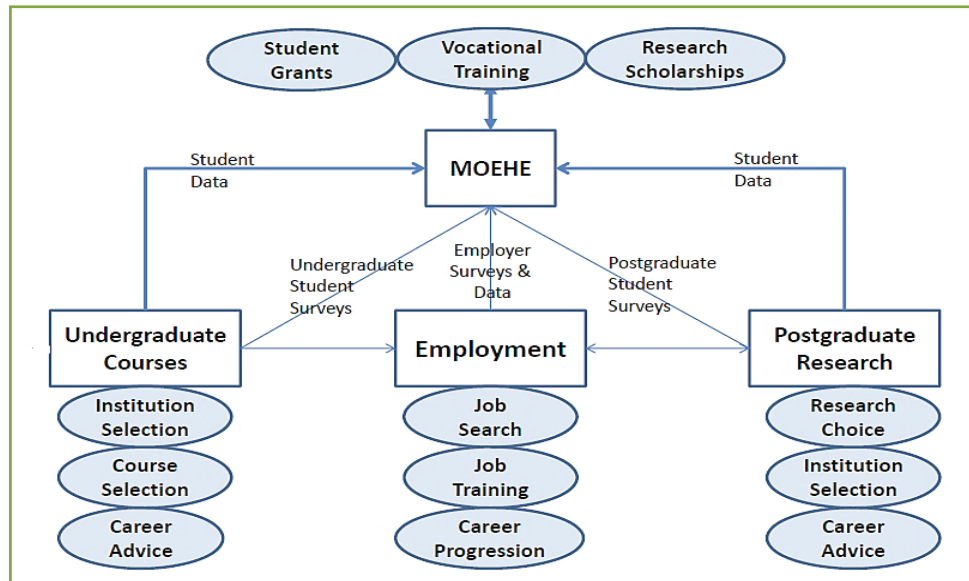
1. **Designer:** authorized to create and design new surveys;
2. **Reviewer:** authorized to review a designed survey and make changes to it;
3. **Translator:** authorized to translate a survey from one language into another;
4. **Publisher:** authorized to publish a reviewed survey for use by its target audience;
5. **Distributor:** authorized to distribute a national survey from MOEHE to TEIs;
6. **Analyst:** authorized to view survey results or reports generated from it.

The **GTS** administrator can define and add new roles to suit the particular survey being designed. **GTS** uses icons to make it easier for designers and reviewers to create and edit surveys.



Benefits & Beneficiaries

GTS will benefit a number of groups interested in the quality and efficiency of the education system in Palestine but its benefits will depend on how it is utilized by TELs and how the data collected will be presented and used.



The ultimate beneficiaries from this system are students. The GTS and the data it collects has the potential to improve students'

1. Choice of institutions and study programs;
2. Choice of career and profession;
3. Job opportunities and career growth;
4. Satisfaction with the educational experience;
5. Choice of further training/research/higher education.

These benefits extend to parents in advising their children on education and career choices.

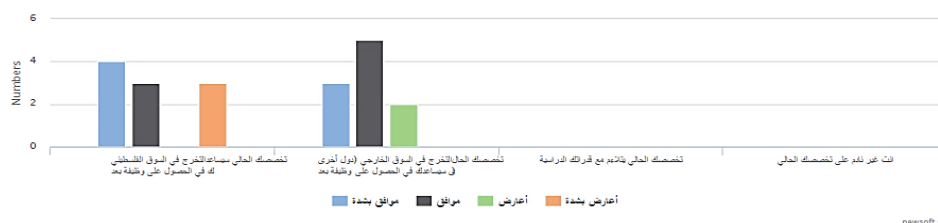
Student Indicators Reports

05/02/2016 3:38:17 PM Page / 1

1- Perception of students on the relationship between selected major and local and regional labor markets. »

Q 4) I will read you a series of statements about the current specialty, please tell me the degree agree with each statement?

1- Perception of students on the relationship between selected major and local and regional labor markets. ≡

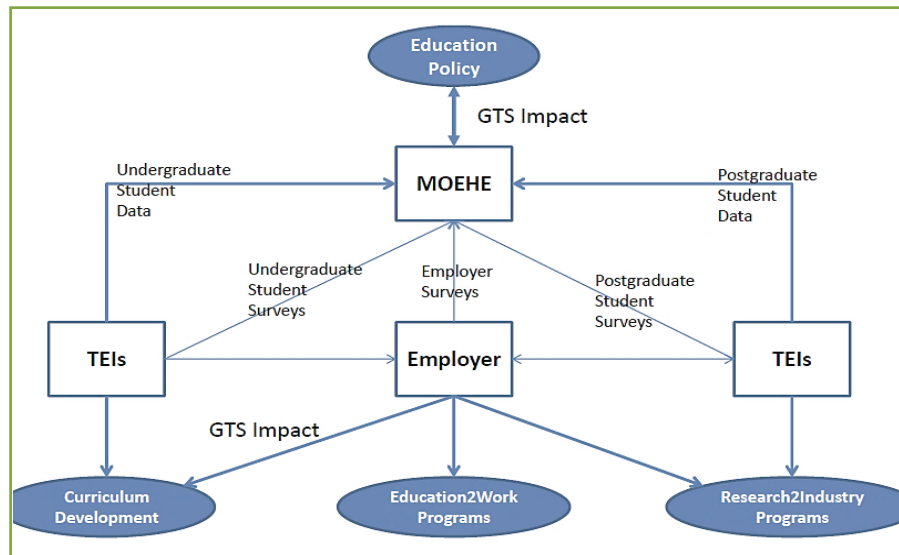


	Strongly Agree	OK	Oppose	Strongly Disagree	Total
This specialty will help you get a job after graduation in the Palestinian market.	4	3	0	3	10
This specialty will help you get a job after graduation in the external market (in other countries)	3	5	2	0	10
Current specialty in line with the academic abilities	0	0	0	0	0
You are no regrets about the current specialty	0	0	0	0	0
Total	7	8	2	3	20



The direct beneficiaries from the system are the education institutions themselves. TEIs will be able to use **GTS** and the data it collects it to improve:

1. The range of courses, degrees and specializations they offer;
2. Curricula and content of existing courses and specializations;
3. Teaching methods and techniques;
4. Practical and technical training with industry-partnerships;
5. Capacity to secure funding for proposed programs/developments;
6. Capacity to monitor and evaluate performance (of staff, programs, changes).



MOEHE will benefit from **GTS** as the governing institution responsible for education policy, accreditation and training. Using the data collected national MOEHE will be able to:

1. Enhance the specification, publishing, collection and analysis of data from stakeholders;
2. Evaluate the performance of the education system in Palestine compared to other countries;
3. Support proposed educational policies and programs with empirical historic data;
4. Monitor and evaluate the success of specific public or private educational interventions;
5. Publish performance data to the general public and students to increase awareness about educational options, choices and courses to study in Palestine.

Employers and the labor market will also benefit from any improvements to the educational system resulting from **GTS**. In particular employers will be able to:

1. Provide feedback to MOEHE and TEIs about the quality and performance of graduates;
2. Select graduates from institutions with relevant courses and higher quality;
3. Prepare and manage the training of new graduates;
4. Partner with TEIs to develop joint professional training or internships for students;
5. Partner with TEIs to support research and development in particular areas.



Survey Responses Report

Pages Number : 1

Questions Number : 21

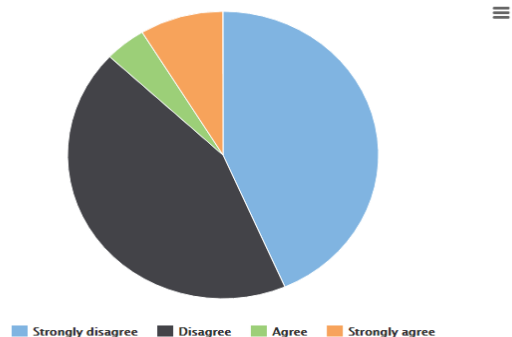
Total Responses : 23

page

Q 4) The following are a set of statements about your current major, please indicate to what extent you agree with each one

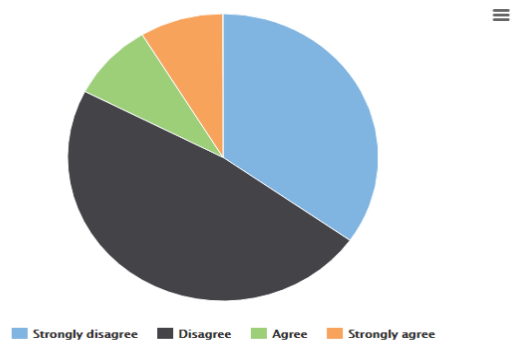
Your major will help you getting a job after graduation in the Palestinian labor market

Answer	Count	Ratio
Strongly disagree	10	43.5 %
Disagree	10	43.5 %
Agree	1	4.3 %
Strongly agree	2	8.7 %



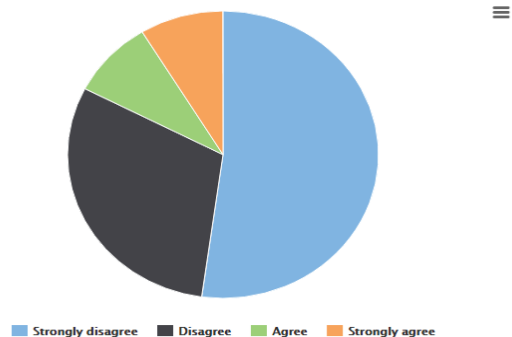
Your major will help you getting a job in the foreign/regional labor market

Answer	Count	Ratio
Strongly disagree	8	34.8 %
Disagree	11	47.8 %
Agree	2	8.7 %
Strongly agree	2	8.7 %



Your major match your studying abilities

Answer	Count	Ratio
Strongly disagree	12	52.2 %
Disagree	7	30.4 %
Agree	2	8.7 %
Strongly agree	2	8.7 %



For more information please contact us at the following address:

Ministry of Education and Higher Education, Directorate General of Development and Scientific Research
Ramallah, Palestine

Tel.: +970 2 2982605, E-mail: msalahat@mohe.gov.ps

